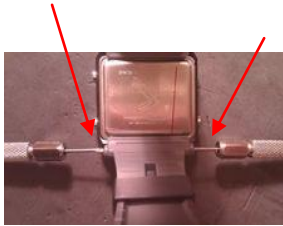


How to replace battery on SPINTSO watch

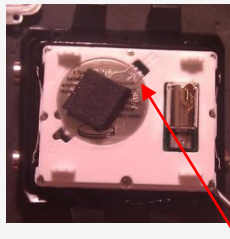
1. Start by removing the two screws at each end of the strap (use two screwdrivers)



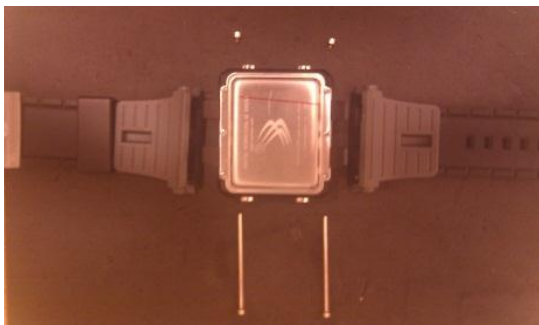
2. Pull and press from the other side with the screwdriver



3. Remove all six screws and open the lid



4. Use a pin or small screwdriver to lift the battery cover



5. Replace the battery and mount back all the screws, the long screw can be a bit hard to press into the hole